

# Shopbox

## Grocery deliveries reimagined



## Technical Specifications

Shopbox has 3 compartments: ambient, chilled and frozen:

- Products in the chilled compartment are kept at below 5°C for 12 hours when the external temperature is a constant 32°C\*
- Products in the frozen compartment are kept at -15°C for 12 hours when the external temperature is a constant 32°C\*
- The frozen compartment can also be used for chilled goods when no frozen goods are ordered.

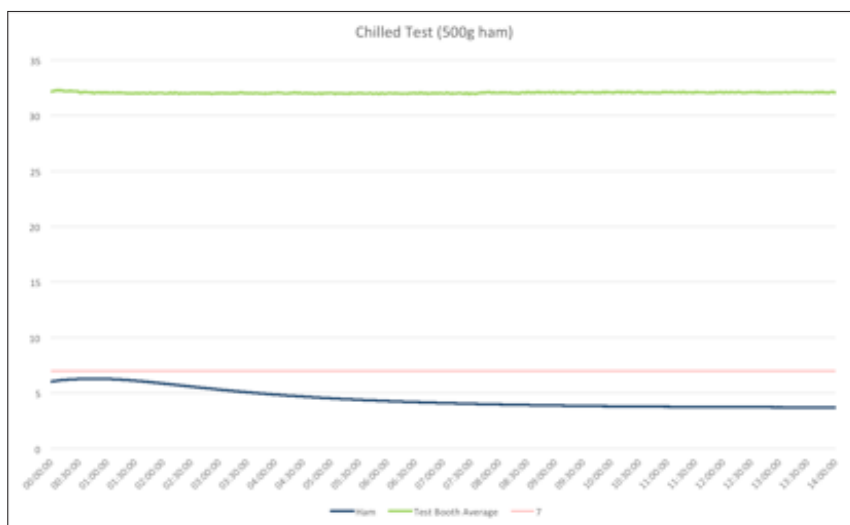
**External dimensions:** 100cm (h) x 90cm (w) x 60cm (d)

\*See [www.shopbox.co.uk](http://www.shopbox.co.uk) for full terms and conditions.

- Designed to fit a full trolley load of groceries
- No electrical connection needed – powered by custom designed eutectic plates (patent pending)
- Quick to install and can be easily moved around to a new location
- Lock opened by 4 digit pin code. Can provide notifications and can integrate with any system
- Completely secure – can be clamped to any fixture

## Thermal tests:

### Chilled compartment:



### Frozen compartment:

